

AV3000 series

A4 Document Scanner

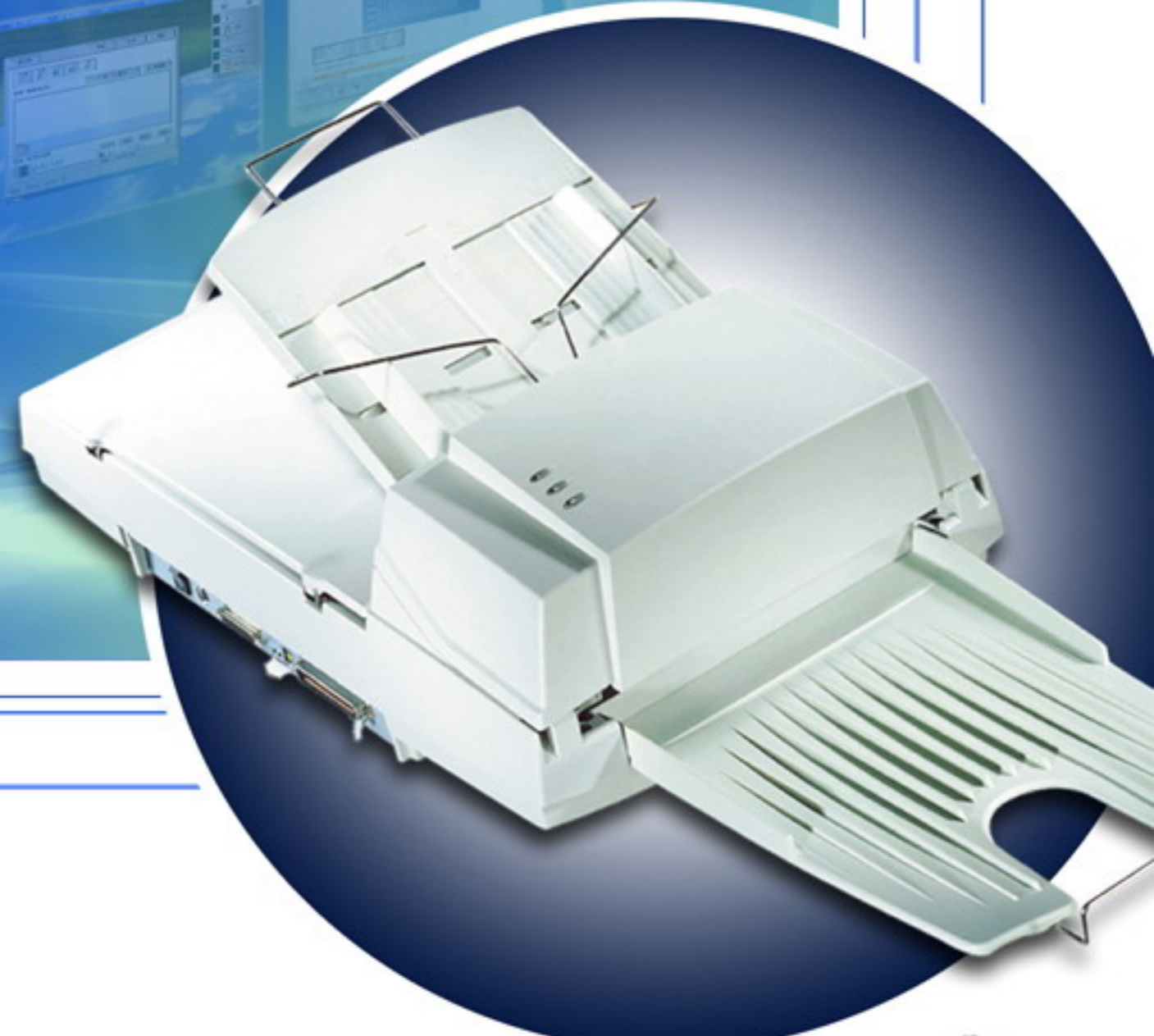
AV3200SU / AV3750SU / AV3850SU

A4 Fast Scanning, Versatile, Best Value!

>Speed, simplicity and advanced imaging for workgroup applications



- Color
- B/W
- Gray
- CCD
- Size
- ADF
- USB
- SCSI
- Duplex
(AV3200SU/ AV3850SU)
- Flatbed



AV3000series A4 Document Scanner AV3200SU/ AV3750SU/ AV3850SU

- Fast monochrome scan rates of up to 50 ppm, 100 images ipm (AV3850SU)
- Dual interface featuring SCSI-II & Hi-Speed USB 2.0
- CCD scanning technology, 600dpi Optical Resolution
- 50 page Automatic Document Feeder

Model	Connectivity	Scanner Type	Speed at 200dpi, B/W
AV3200SU	USB & SCSI-II	duplex	25ppm / 50ipm
AV3750SU	USB & SCSI-II	simplex	50ppm
AV3850SU	USB & SCSI-II	duplex	50ppm / 100ipm

AV220C2
A4 Sheetfed Scanner
35ppm/ 70ipm



AV320PLUS
A3 Sheetfed Scanner
50ppm/ 100ipm



FB6080E
A3 Bookedge Scanner
6.7sec.(A3,200dpi,B/W)

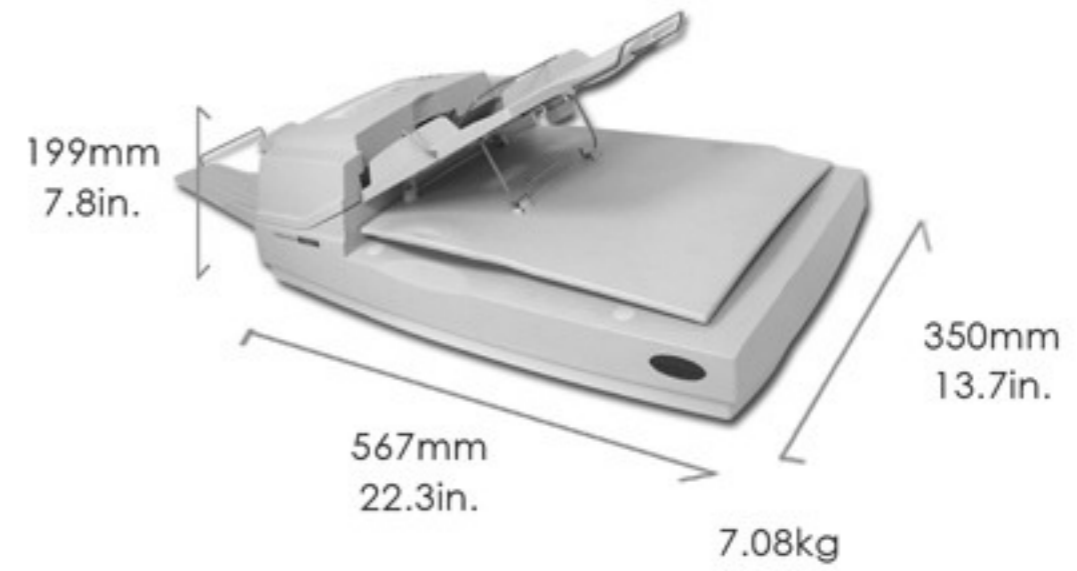


Turn Document into Digital World

Avision

AV3200SU / AV3750SU / AV3850SU

The AV3000series(AV3200SU/ AV3750SU/ AV3850SU) are document scanners capable of simplex/duplex scan. With built-in auto-paper feeders, the AV3000 series scanners are extremely efficient in performing duplex scan for a stack of double-sided documents. In simplex (one-sided) scan mode, the AV3000 series scan up to 50 pages per minute, and in duplex (double-sided) mode, scan up to 100 images. The auto-paper feeder of the AV3000 series has a cavernous capacity of 50 sheets. All these features make these scanners an essential part of every digital office.



Features

- Automatic image cropping and straightening at full scanning speed.
- Fast USB 2.0 interface for plug-and-play connectivity and rapid transfer of images.
- Industry-standard ISIS and exclusive Avison-developed TWAIN driven to achieve rated speeds and easy integration.
- Professional bundled software includes Avison AVScan, Avison Capture Tool, Scansoft PaperPort, Kofax VRS
- The Automatic Document Feeder (ADF) can handle large batch of papers up to 50 sheets per time and ensures hassle-free scanning.
- Brightness and contrast controls to customize color output for specific applications.

AV3000 series SPEC.

Throughput Speeds (portrait,A4 size)	B/W, 200dpi	Avison
AV3200SU	25ppm/50ipm	
AV3750SU	50ppm	
AV3850SU	50ppm/100ipm	
Scanning Mode	AV3200SU/3850SU : Duplex AV3750SU : Simplex	
Scanning Technology	Color-Change-Coupled Device (CCD)	
ADF capacity	50 sheets	
Recommended Daily Volume	Up to 2,500 pages per day(AV3200U) Up to 3,500 pages per day(AV3750SU & AV3850SU)	
Optical Resolution	600 dpi	
Maximum Document Size	Flatbed : 215 mm x 297 mm (8.5 in. x 11.7 in.) (A4 size) ADF : 215 mm x 355 mm (8.5 in. x 14 in.) (legal size)	
Minimum Document Size	ADF : 94 mm x 139 mm (3.7 in. x 5.5 in.)	
Connectivity	SCSI-II & USB 2.0 (cable included)	
Interface Support	TWAIN and ISIS drivers (included)	
Imaging Features	Auto deskew and cropping, simultaneous output of bitonal, grayscale and color images, blank page removal , Auto brightness and contrast control(Threshold).	
File Format Outputs	PDF, Multi-page TIFF and JPEG, GIF, BMP.	
Standard bundled software	Capture tool, ScanSoft PaperPort 11.0, ISIS Driver, Twain Driver, AVScan (only for AV3750SU & AV3850SU), Kofax VRS (only for AV3850SU)	

Minimum System Requirements

- Pentium III or higher
- Win98SE/ME/2K/XP/Vista
- 128MB RAM (256MB RAM for Windows XP)
- CD-ROM device
- USB port

Contents

- AV3200SU / AV3750SU / AV3850SU scanner
- Power Supply
- USB 2.0 Cable
- CD-ROM including:
 - Scanner Driver (TWAIN / ISIS Driver)
 - Avison Capture Tool
 - AVScan (only for AV3750SU & AV3850SU)
 - Kofax VRS (only for AV3850SU)

